

# BRIDGE B48

Jdeideh Highway  
Towards Saloumeh  
W: 26m x H: 2.5m  
**Rate Card: \$10,000**

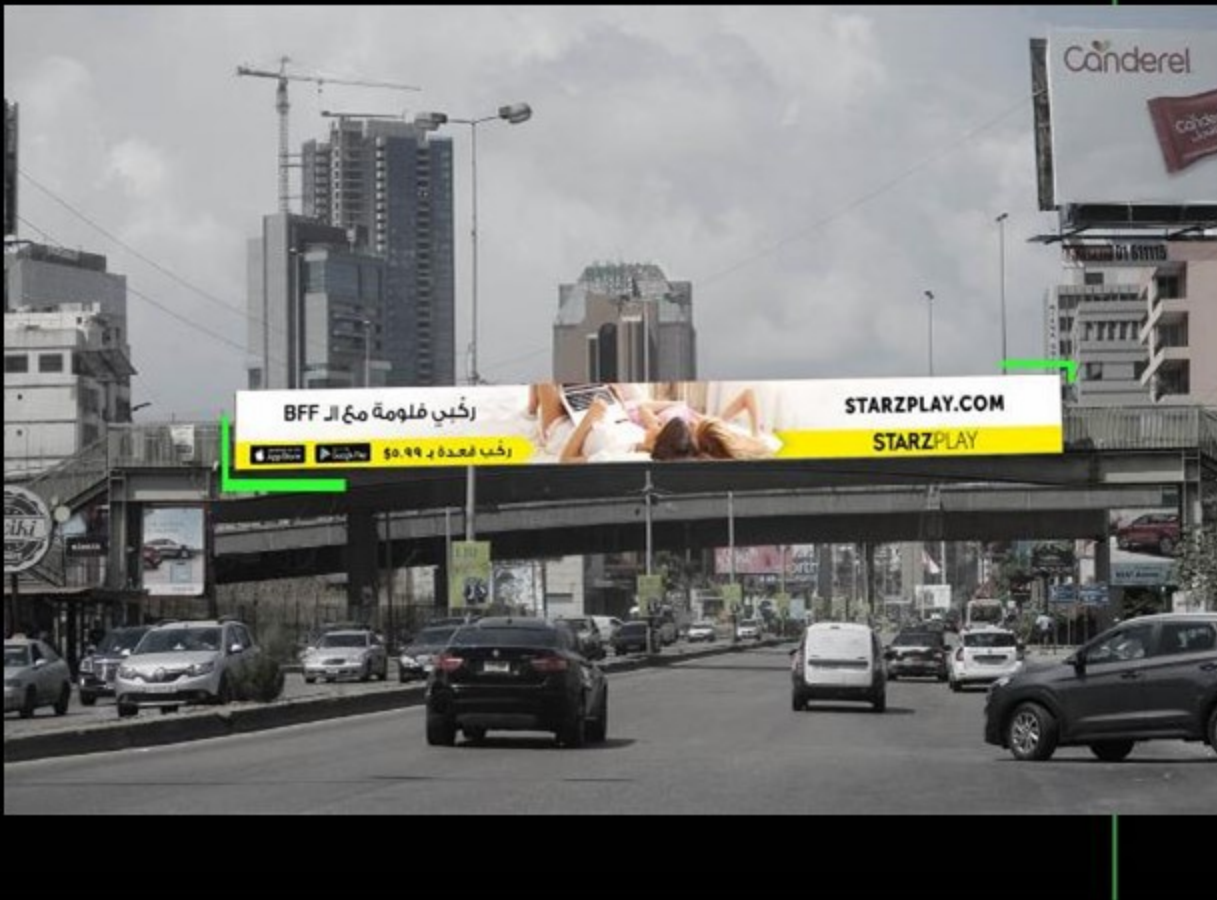
Reach & Measurement



Impressions	2579
Reach	29.23
OTS	7.91
GRP	231

Technical Specs

**File Format:** PDF or PSD  
**Resolution:** 300 dpi  
10% scale of the real size



 [Find on Google maps](#)

[www.vivad.com](http://www.vivad.com)

**VIVAD**